

P1157E-500

15" XGA TFT Expandable Industrial Touch Panel Computer with 7th/6th Gen Intel® Core™ i7/i5/i3, Celeron® & Pentium® Processor and PCI/PCIe Slot

Features

- 15" XGA TFT LCD display
- LGA1151 socket 7th/6th gen Intel® Core™ i7/i5/i3, Celeron® & Pentium® processors
- Intel® H110 chipset
- Less screw design for easy installation
- 4 USB 3.0, 2 USB 2.0 and 4 COM
- One PCIe x4 or one PCIe slot
- Built-in speakers and optional Wi-Fi 802.11 b/g/n module
- Robust IP65 compliant aluminum front bezel
- Supports 5 OSD keys in front panel



▲ Side view



▲ Back view



Introduction

The P1157E-500 is a multimedia 15" touch panel PC for kiosk application. It has a fashionable mechanism design and industrial-grade material front bezel which can avoid damage from chemical corrosion. To meet the demands of multimedia application, the P1157E-500 is powered by a high performance LGA1151 socket 7th/6th generation Intel® Core™ processor with the Intel® H110 chipset. It features four COM ports, two Gigabit Ethernet and up to 32GB memory of dual-channel DDR4-2133 that delivers high computing capability for high performance-demanding applications. The industrial touch panel PC is most suitable for kiosk, factory and automation.

Expandable for 1 PCIe or 1 PCI

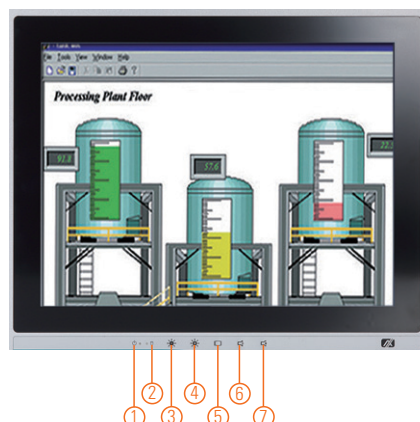
The P1157E-500 has one PCIe x4 or PCI slot for expansion purpose. User can easily plug in standard half-size PCI or PCIe card based on any application needs.

Speaker and WLAN Antenna Supported

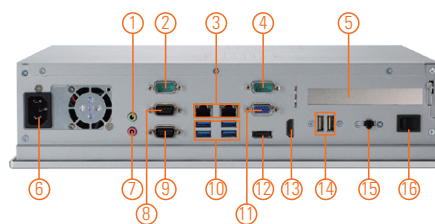
The P1157E-500 features built-in speakers for kiosk application to display multimedia content program. It also supports WLAN module antenna (optional) for wireless network connectivity.

Friendly Less Screw Design

The P1157E-500 is designed with easy of maintenance in mind. There are only four screws on the back chassis, so that technicians can quickly remove the system's back cover with minimum effort.



1. Display status LED
2. SATA status LED
3. Brightness -
4. Brightness +
5. Display monitor ON/OFF
6. Volume -
7. Volume +



1. 1 x Line-out
2. 1 x RS-232
3. 2 x LAN
4. 1 x RS-232
5. PCI or PCIe x4 expansion slot
6. AC plug
7. 1 x Mic-in
8. 1 x RS-232/422/485
9. 1 x RS-232
10. 4 x USB 3.0
11. 1 x VGA
12. 1 x DisplayPort
13. 1 x HDMI
14. 2 x USB 2.0
15. Remote power switch
16. Switch for power on/off

Specifications

Front Bezel	Aluminum w/ IP65/NEMA 4 rugged protection	
LCD Panel	Display Type	15" XGA TFT LCD
	Brightness	250 nits
	Resolution	1024 x 768 pixels
	Viewing Angle	160°/140°
Main System	CPU	LGA1151 socket 7th/6th gen Intel® Core™ i7/i5/i3, Celeron® & Pentium® processor
	Chipset	Intel® H110
	System Memory	2 x 288-pin DDR4-2133 Long-DIMM, up to 32GB
	BIOS	AMI UEFI BIOS
	Storage	1 x 3.5" or 1 x 2.5" SATA HDD (9.5 mm height)
	Drive	N/A
	Watchdog Timer	255 levels, 1 to 255 sec.

Specifications

IO Connector	3 x RS-232 1 x RS-232/422/485 1 x HDMI 1 x VGA 1 x DisplayPort 4 x USB 3.0 2 x USB 2.0 2 x 10/100/1000 Mbps Ethernet (Intel® i219-LM/i211-AT) 1 x Audio (Mic-in & Line-out) 1 x Remote power switch
TPM	N/A
Expansion Interface	1 x PCIe x4 or 1 x PCI
Touchscreen	5-wire resistive type or projected capacitive multi-touch
Power Supply	100 to 240 VAC, 200W
Power Consumption	97.6W
Dimensions	378.3 mm (14.89") (W) x 90 mm (3.54") (D) x 310.3 mm (12.22") (H)
Packing Dimensions	510 mm (20.08") (W) x 186 mm (7.32") (D) x 532 mm (20.94") (H)
Weight (net/gross)	5.4 kg (11.90 lb)/7.8 kg (17.20 lb)
Operating temperature	0°C to +50°C (+32°F to +122°F)
Relative humidity	10% to 90% @ +40°C, non-considering
Operating vibration	1.0G, 5 - 500 Hz, random
Certifications	CE

Packing list

1 x P1157E-500
1 x Panel mount kit
1 x US power cord

Ordering Information

P1157E-500 w/PCIe (P/N: E221157114)	15" XGA expandable industrial touch panel computer with LGA1151 socket 7th/6th gen Intel® Core™ i7/i5/i3, Pentium® & Celeron® processor, resistive touch screen, PCIe x4 slot and 100 to 240 VAC
P1157E-500 w/PCI (P/N: E221157112)	15" XGA expandable industrial touch panel computer with LGA1151 socket 7th/6th gen Intel® Core™ i7/i5/i3, Pentium® & Celeron® processor, resistive touch screen, PCI slot and 100 to 240 VAC
P1157E-500-PCT w/PCIe (P/N: E221157121)	15" XGA expandable industrial touch panel computer with LGA1151 socket 7th/6th gen Intel® Core™ i7/i5/i3, Pentium® & Celeron® processor, PCAP multi-touch screen, PCIe x4 slot and 100 to 240VAC
P1157E-500-PCT w/PCI (P/N: E221157119)	15" XGA expandable industrial touch panel computer with LGA1151 socket 7th/6th gen Intel® Core™ i7/i5/i3, Pentium® & Celeron® processor, PCAP multi-touch screen, PCI slot and 100 to 240VAC

* Other configuration by request

* Specification and certifications may vary based on different requirements

Optional Accessories

Wi-Fi kit	
P1157E-500 2.5" slim HDD kit	
881211572A0E	P1157E-500 rack mount kit
881211575A0E	VESA & wall mount kit
E981604011	ATC10 (VESA arm clamp type)
E981604012	ATW10 (VESA arm wall mount)
E226171119	Stand kit
59403200B00E	Remote power switch cable (100 cm)

Optional OS Installation

Skylake: Windows® 7
Windows® 8.1
Windows® 10

Kaby Lake: Windows® 10

Dimensions

