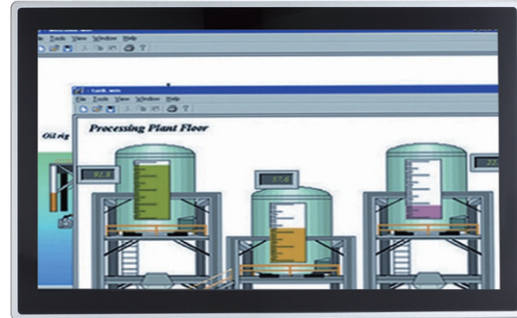


# GOT318W-521 NEW

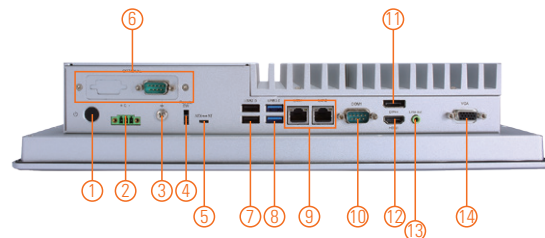
18.5" FHD TFT Multi-touch Panel Computer with LGA1151 9th/8th Gen Intel® Core™ i7/i5/i3, Intel® Pentium® Processors Gold/Celeron® Processors (Tj 100°C , TDP 35W)

## Features

- 18.5" FHD projected capacitive multi-touch or 5-wire resistive touch
- Fanless design with LGA1151 9th/8th gen Intel® Core™ i7/i5/i3, Intel® Pentium® processors Gold/Celeron® processors (Tj 100°C , TDP 35W)
- Supports WLAN module & antenna (optional)
- 2.5" SATA HDD/SSD
- 2 LAN, 4 USB, 2 COM, 1 HDMI, 1 DP and 1 VGA
- IP65-rated aluminum front bezel
- Supports panel mount and VESA mount and wall mount



▲ Rear view



1. Power button
2. Phoenix small type connector
3. Grounding hole
4. Remote power switch
5. AT/ATX switch
6. Optional flexible I/O (default 1 x RS-232)
7. 2 x USB 2.0
8. 2 x USB 3.0
9. 2 x RJ-45 for Giga Ethernet
10. 1 x COM for RS-232/422/485
11. 1 x DP
12. 1 x HDMI
13. 1 x Line-out
14. 1 x VGA



## Introduction

The GOT318W-521 is a fanless panel PC with 18.5-inch FHD LCD and supports LGA1151 9th/8th gen Intel® Core™ i7/i5/i3, Intel® Pentium® processors Gold/Celeron® processors (Tj 100°C , TDP 35W). It also provides M.2 Key E and mini-PCI Express slots for add-on devices such like Wi-Fi module for factory automation, and oil pipe monitoring system.

### 18.5-inch FHD LCD with PCT or Resistive Touch

The 18.5" FHD touch panel PC supports 500 nits brightness, able to display contents in FHD resolution. With projected capacitive multi-touch screen or 5-wire resistive touch, users can operate the device more directly and friendly. The touch glass surface is up to 3H for anti scratch purpose.

## Specifications

Front Bezel	IP65 front bezel	
LCD Panel	Display Type	18.5" FHD TFT LCD
	Brightness (cd/m <sup>2</sup> )	500 nits
	Resolution	1920 x 1080
Main System	CPU	LGA1151 9th/8th gen Intel® Core™ i7/i5/i3, Intel® Pentium® processors Gold/Celeron® processors (Tj 100°C, TDP 35W)
	Chipset	Intel® H310
	System Memory	1 x 260-pin DDR4-2666/2400 SO-DIMM, up to 32GB
	BIOS	AMI UEFI BIOS
	Storage	1 x mSATA 1 x 2.5" SATA HDD/SSD (7 mm and 9.5 mm, removable)
	Watchdog Timer	255 levels, 0 to 255 sec.
	Onboard Graphics	Intel® integrated Gfx graphic engine

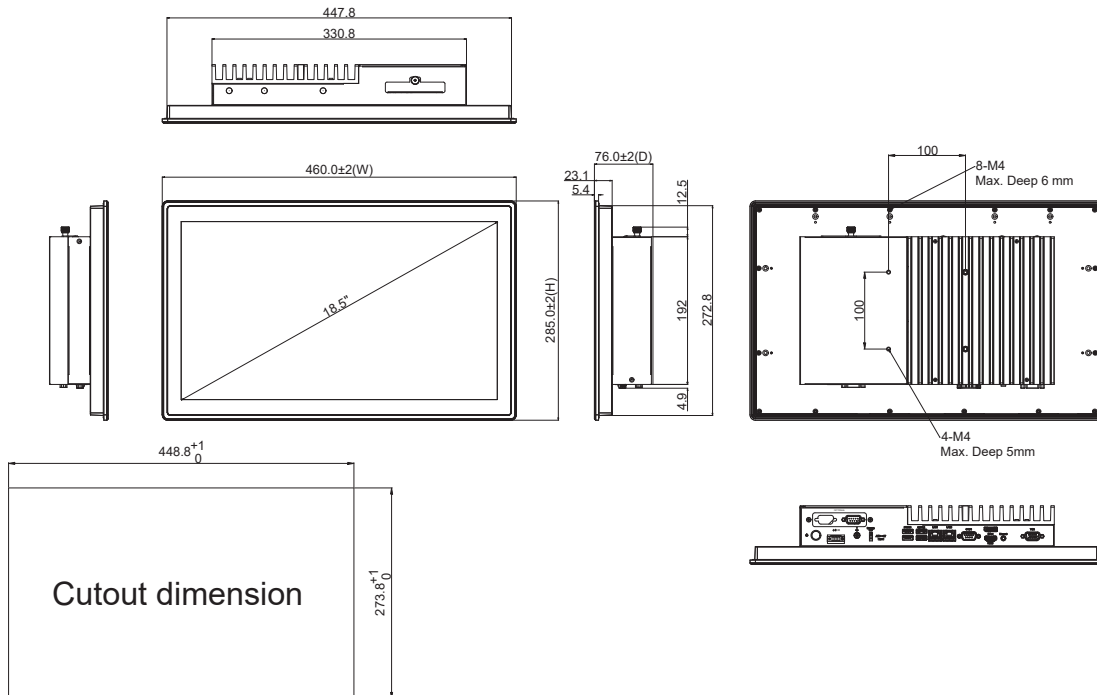
## Specifications

I/O Connector	1 x 9-pin D-sub Male for RS-232 1 x COM for RS232/422/485 2 x RJ45 for Giga Ethernet 2 x USB 3.0, 2 x USB 2.0 1 x Phoenix type connector for DC power input 1 x Switch for power on/off (ATX) 1 x Line-out 1 x HDMI 1 x DP 1 x VGA 1 x Remote power switch 1 x AT/ATX switch (DC type only) 1 x Grounding hole (DC Version)
TPM	TPM 2.0
Expansion Interface	1 x Full-size PCI-Express Mini Card slot (PCIe + SATA + USB) 1 x M.2 Key E 2230 (for Wi-Fi)
Touchscreen	Projected capacitive multi-touch or 5-wire resistive touch
Power Supply	+12V/+19V/+24VDC 1x terminal block
Power Consumption	120W
Dimensions	460.8 mm (18.11") (W) x 77 mm (3.04") (D) x 285 mm (11.22") (H)
Packing Dimensions	605 mm (23.81") (W) x 200 mm (7.87") (D) x 505 mm (19.88") (H)
Weight (net/gross)	7.8kg (17.2lb)/10.2kg (22.5lb)
Operating Temperature	0°C to +50°C (+32°F to +122°F)
Relative Humidity	20% to 90% @ +40°C; non-condensing
Operation Vibration	1G, 10 - 500 Hz, random for 2.5" SATA HDD
Certifications	CE, EN 61000-6-2, EN 61000-6-4

## Packing List

- 1 x GOT318WL-521
- 1 x Phoenix connector

## Dimensions



## Ordering Information

GOT318W-521-PCT-DC (P/N: E22B318104)	18.5" FHD TFT fanless touch panel computer support LGA1151 9th/8th gen Intel® Core™ i7/i5/i3, Intel® Pentium® processors Gold/Celeron® processors (Tj 100°C, TDP 35W), projected capacitive multi-touch screen and 24 VDC terminal block with small Phoenix connector
GOT318W-521-R-DC (P/N: E22B318105)	18.5" FHD TFT fanless touch panel computer supports LGA1151 9th/8th gen Intel® Core™ i7/i5/i3, Intel® Pentium® processors Gold/Celeron® processors (Tj 100°C, TDP 35W), 5-wire resistive touch screen and 24 VDC terminal block with small Phoenix connector

- \* Other configuration by request
- \* Specification and certifications may vary based on different requirements

## Optional Accessories

4G LTE Kit	
Wi-Fi kit	
881231770A0E	Wall mount kit
882B31800A0E	Panel mount kit
50906D24000E	Adaptor 24V/120W, wire only, FSP120-AAAN3
594K6220210E	Remote power cable, L= 720 mm

## Optional EOS Installation

Windows® 10 IoT Enterprise

## Optional OS Installation

Windows® 10