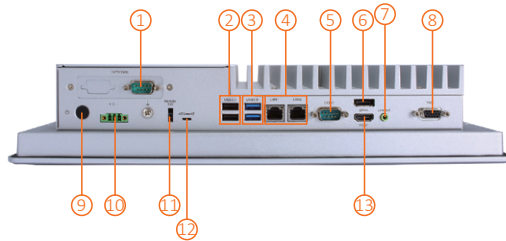
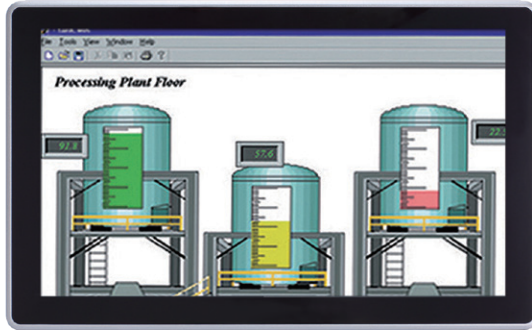


GOT321W-521

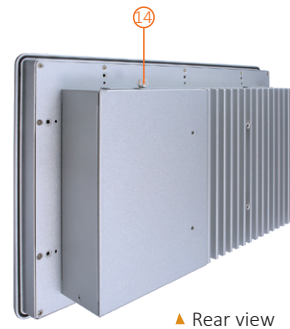
21.5" FHD TFT Expandable Touch Panel Computer with LGA1151 9th/8th Gen Intel® Core™ i7/i5/i3, Intel® Pentium® Gold or Intel® Celeron® Processor (up to 35W)



- | | |
|--------------------|---------------------------------------|
| 1. 1 x COM (cable) | 8. 1 x VGA |
| 2. 2 x USB 2.0 | 9. Power button (ATX) |
| 3. 2 x USB 3.0 | 10. Terminal block for DC power input |
| 4. 2 x LAN | 11. Remote power switch |
| 5. 1 x COM | 12. AT/ATX selectable switch |
| 6. 1 x DisplayPort | 13. 1 x HDMI |
| 7. 1 x Line-out | 14. Swappable HDD |

Features

- 21.5" FHD 10-point multi-touch projected capacitive widescreen or 5-wire resistive touch
- Fanless design with LGA1151 9th/8th gen Intel® Core™ i7/i5/i3, Intel® Pentium® Gold or Intel® Celeron® processor
- Supports WLAN module and antenna (optional)
- 2.5" SATA HDD/SSD
- 2 LAN, 4 USB, 2 COM, 1 HDMI, 1 DisplayPort, and 1 VGA
- IP65-rated aluminum front bezel
- Supports panel mount, VESA mount, and wall mount



Introduction

The GOT321W-521 is a fanless panel PC with 21.5-inch FHD LCD and supports LGA1151 9th/8th gen Intel® Core™ i7/i5/i3, Intel® Pentium® Gold or Intel® Celeron® processor (up to 35W). It also provides M.2 Key E and PCI Express Mini Card slots for add-on devices (e.g. Wi-Fi module) for factory automation and oil pipe monitoring system.

21.5-inch FHD LCD with PCT or Resistive Touch

The GOT321W-521 supports 250 nits brightness with FHD resolution. Equipped with projected capacitive multi-touch screen or 5-wire resistive touch, the GOT321W-521 is user-friendly for operators. The touch glass surface is also up to 3H for anti scratch.

Specifications

| | | |
|-------------|---|--------------------|
| Front Bezel | Aluminum w/ IP65/NEMA 4 rugged protection | |
| LCD Panel | Display Type | 21.5" FHD TFT |
| | Brightness | 250 nits |
| | Resolution | 1920 x 1080 pixels |
| | Viewing Angle | 178°/178° |

| | | |
|-----------------------|--|--|
| Main System | CPU | LGA1151 9th/8th gen Intel® Core™ i7/i5/i3, Intel® Pentium® Gold or Intel® Celeron® processor (up to 35W) |
| | Chipset | Intel® H310 |
| | System Memory | 1 x 260-pin DDR4-2666/2400 SO-DIMM, up to 32GB |
| | BIOS | AMI UEFI BIOS |
| | Storage | 1 x mSATA 1 x 2.5" SATA HDD/SSD (7 mm and 9.5 mm height; removable) |
| | Drive | N/A |
| | Watchdog Timer | 255 levels, 0 to 255 sec. |
| | Onboard Graphics | Intel® integrated Gfx graphic engine |
| IO Connector | 1 x 9-pin D-sub Male for RS-232 1 x RS-232/422/485 2 x RJ-45 GbE LAN 2 x USB 3.0 2 x USB 2.0 1 x Phoenix-type connector for DC power input 1 x Switch for power on/off (ATX) 1 x Line-out 1 x HDMI 1.4b 1 x DisplayPort v1.2 (DisplayPort++) 1 x VGA 1 x Remote power switch 1 x AT/ATX switch (DC type only) 1 x Grounding hole (DC Version) | |
| TPM | TPM 2.0 | |
| Expansion Interface | 1 x Full-size PCI Express Mini Card slot (PCIe + SATA + USB) 1 x M.2 Key E 2230 (for Wi-Fi) | |
| Touchscreen | 10-point projected capacitive multi-touch 5-wire flat resistive touch | |
| Power Supply | +12V/+19V/+24VDC 1 x Terminal block | |
| Power Consumption | 105W | |
| Dimensions | 547.59 mm (21.56") (W) x 75.6 mm (2.98") (D) x 339.05 mm (13.49") (H) | |
| Packing Dimensions | 720 mm (28.34") (W) x 210 mm (8.27") (D) x 550 mm (2.17") (H) | |
| Weight (net/gross) | 8.4 kg (18.5 lb)/11.3 kg (24.9 lb) | |
| Operating Temperature | 0°C to +50°C (+32°F to +122°F) | |
| Relative Humidity | 20% to 90% @ +40°C; non-condensing | |
| Operating Vibration | 1.0G, 5 - 500Hz, random | |
| Certifications | CE | |

Ordering Information

| | |
|---------------------------------------|---|
| GOT321W-521-C-DC (P/N: E22B321105) | 21.5" FHD TFT fanless touch panel computer with LGA1151 socket 9th/8th gen Intel® Core™ i7/i5/i3, Intel® Pentium® Gold or Intel® Celeron® processor (up to 35W), projected capacitive multitouch screen, and 24 VDC terminal block with small Phoenix connector |
| GOT321W-521-R-DC (P/N: E22B321106) | 21.5" FHD TFT fanless touch panel computer with LGA1151 socket 9th/8th gen Intel® Core™ i7/i5/i3, Intel® Pentium® Gold or Intel® Celeron® processor (up to 35W), resistive touch screen, and 24 VDC terminal block with small Phoenix connector |

* Other configuration by request

* Specification and certifications may vary based on different requirements

Packing List

1 x GOT321W-521
1 x Phoenix connector
1 x Panel mount kit

Optional Accessories

Wi-Fi kit

| | |
|--------------|---|
| 881231770A0E | Wall mount kit |
| 509000001500 | Adaptor 24V/120W, wire only, FSP120-AAAN3 |
| 594K6220210E | Remote power cable, L=720mm |

Optional EOS Installation

Windows® 10 IoT Enterprise

Optional OS Installation

Windows® 10

Dimensions

